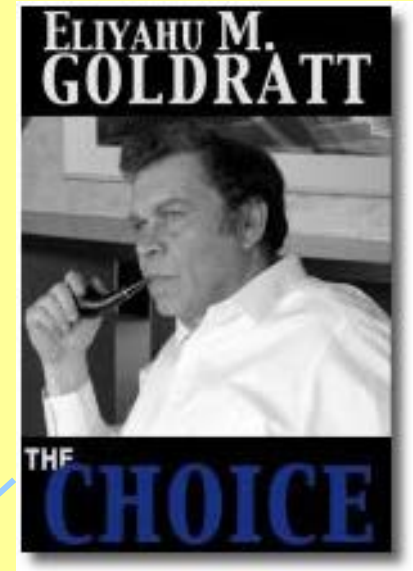




Homework Assignment EM 526 Constraints Management

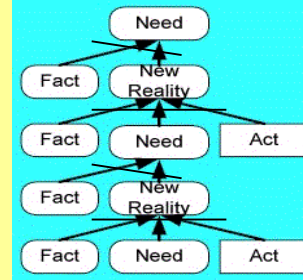
Class Helps Tree: The Choice – Thinking Clearly

**Your Interpreting Text as a Logic Tree:
A Contribution to the Class.**



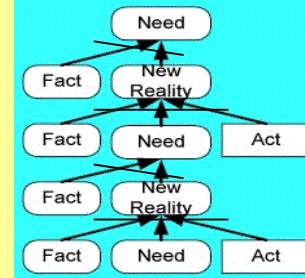
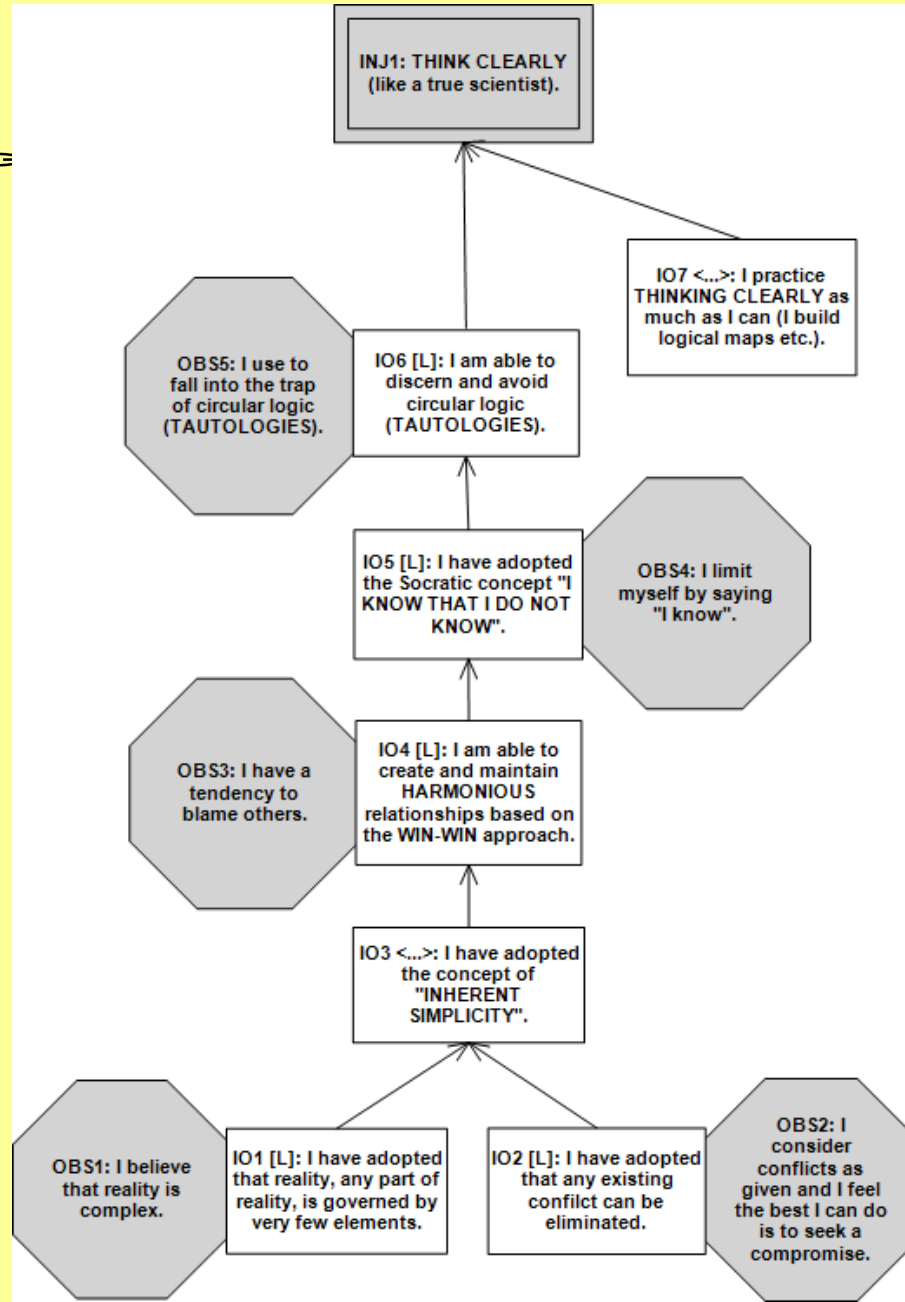
Petr Zitnik

Introduction



- The Choice is about how to live a **FULL - MEANINGFUL LIFE**.
- The most important injection for reaching full life is **THINKING CLEARLY**.
- In The Choice, Eli Goldratt explains what obstacles prevent us from thinking clearly and shows how to overcome them.
- The Logic Trees in this presentation, :
 - PreRequisite Tree – Obstacles to Thinking Clearly and Intermediate Objectives that overcome the Obstacles
 - Transition Tree (in five parts) – How to reach all the IOs stated in the PRT
- In the Transition Tree, some actions entities show how to use what we have learned in the EM 526 for Thinking Clearly and reaching Full Life.

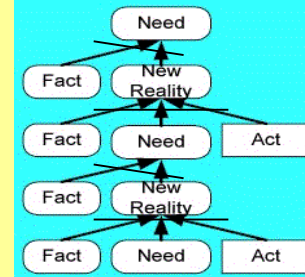
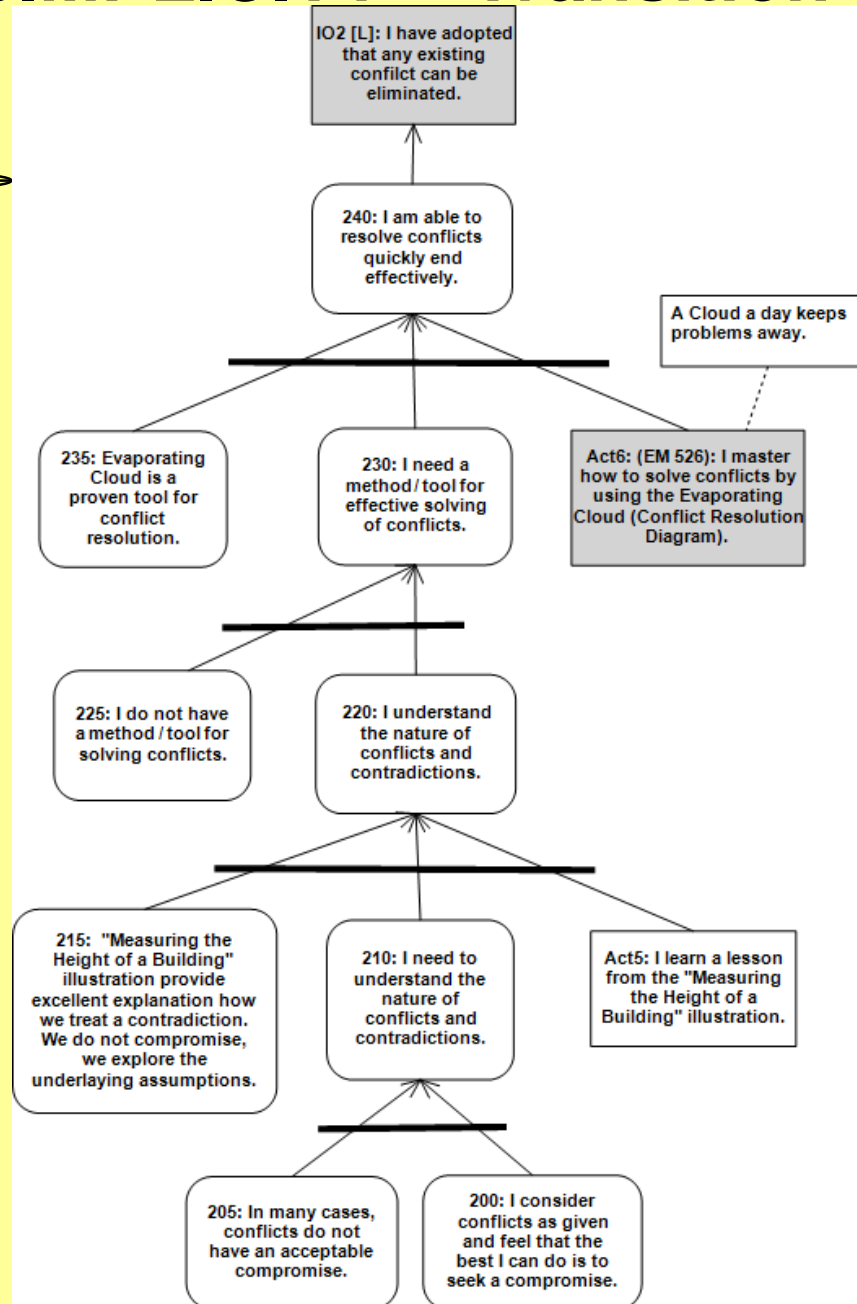
THINKING CLEARLY – PreRequisite Tree



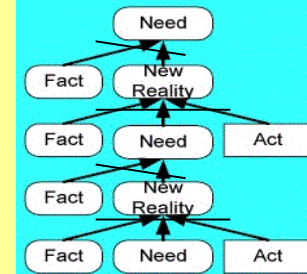
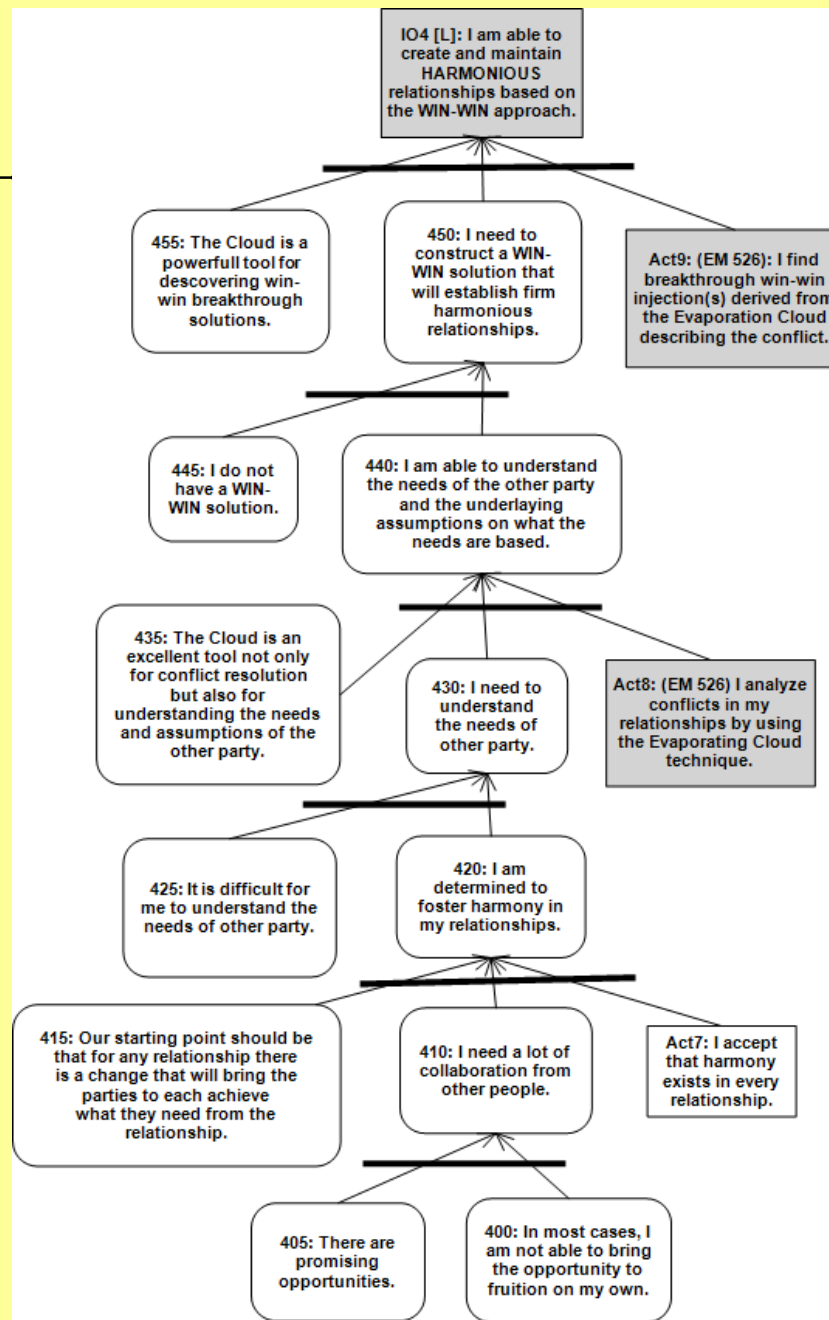
The diagram illustrates a cyclical process of development. At the base, a 'Fact' leads to a 'Need', which then leads to an 'Act'. The 'Act' leads to a 'New Reality', which then leads back to a 'Fact', completing a cycle. This entire cycle is repeated, with each 'New Reality' leading to a higher-level 'Need' at the top of the hierarchy.



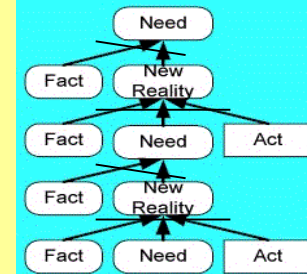
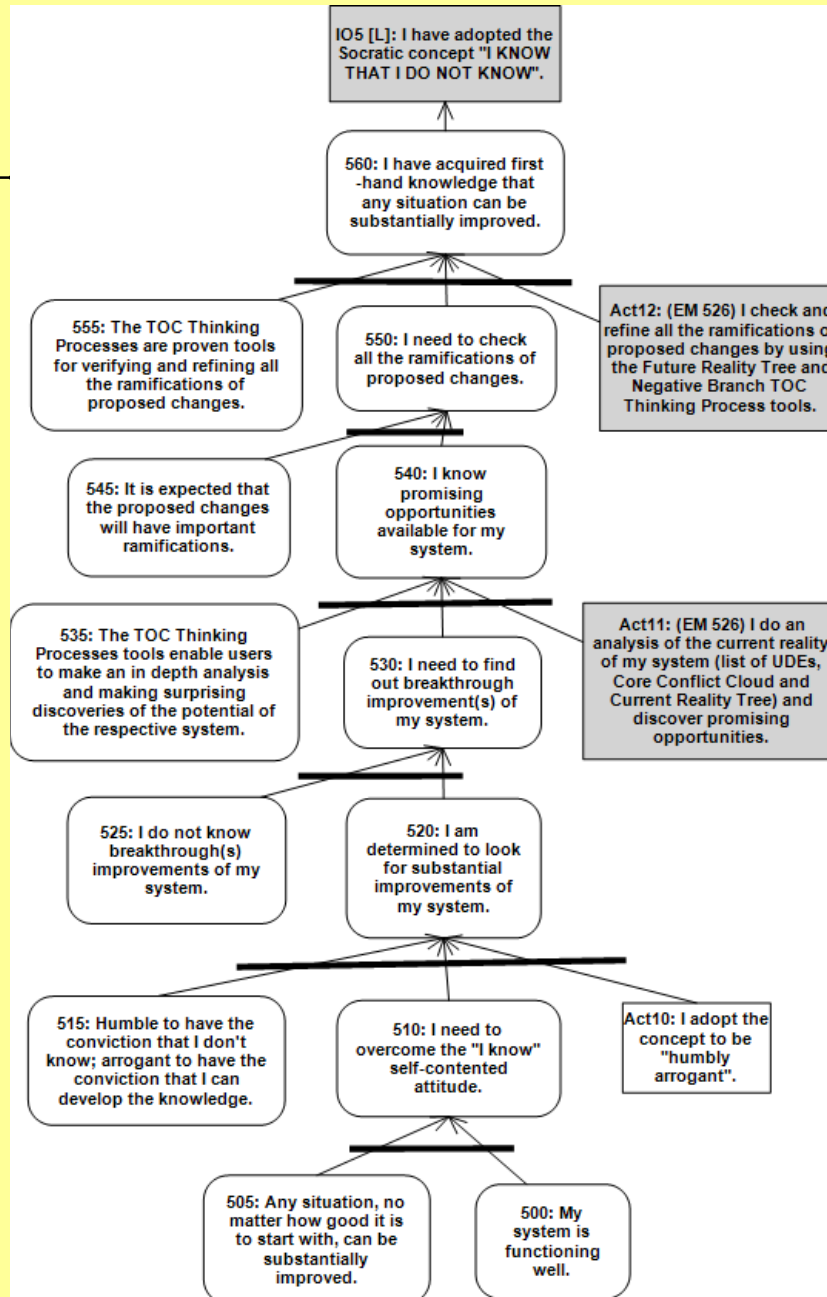
INHERENT SIMPLICITY – Transition Tree #2



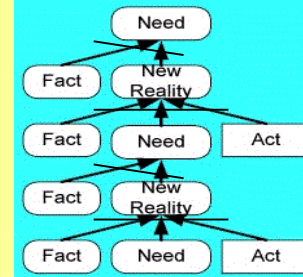
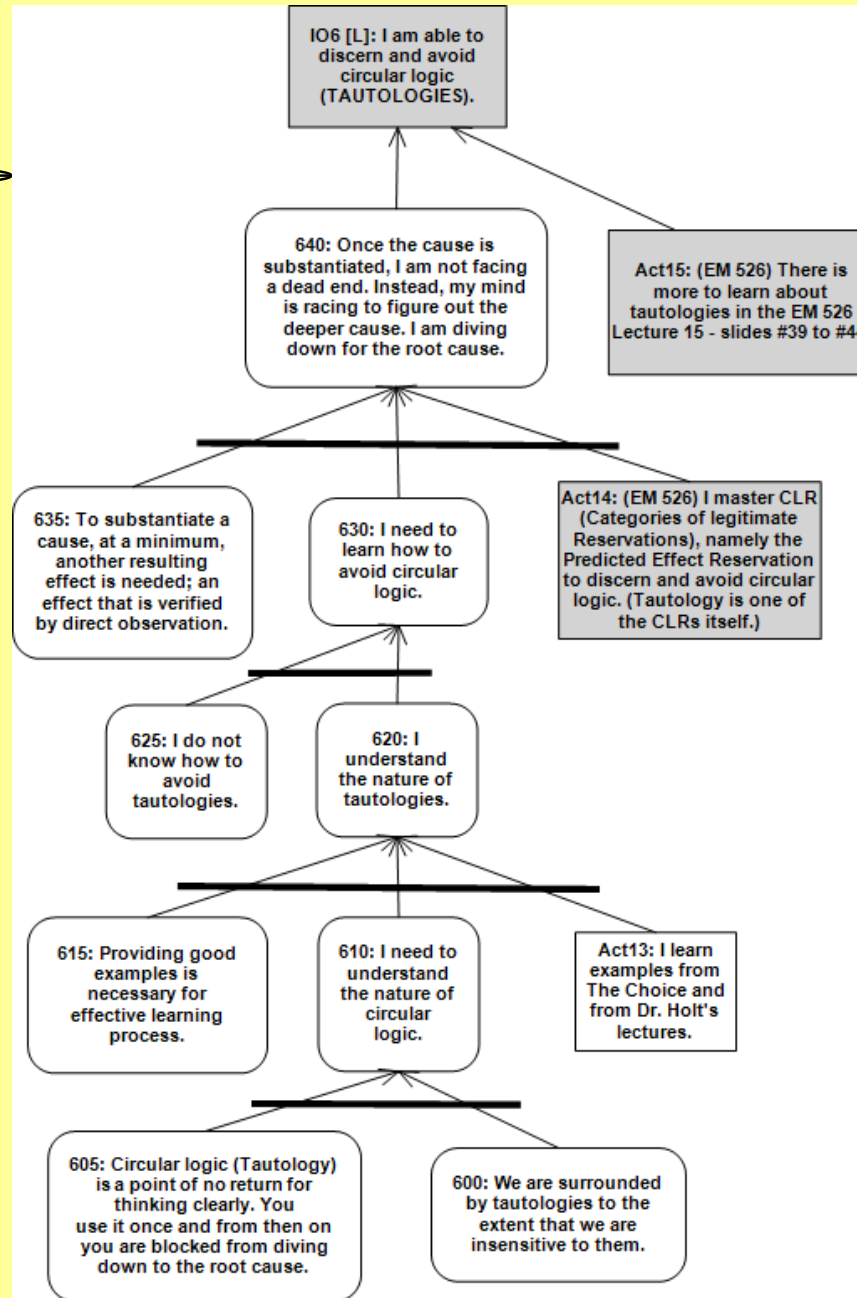
HARMONY – Transition Tree #3



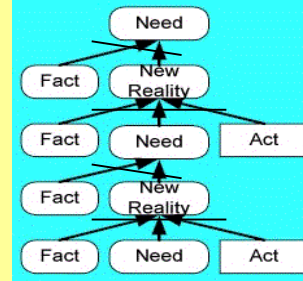
NEVER SAY I KNOW - Transition Tree #4



TAUTOLOGIES - Transition Tree #5



APPENDIX added by Dr. James Holt



To EM 526 Class,

Petr already shared his extract from THE CHOICE with you on the DrHoltlist.

Then I remembered I was to share the map from THE CHOICE which I had not done.

So, I added it to the bottom of Petr's work for your information.

I suggest you read Petr's trees again before you get to the last slide.

In the Map, Efrat turned the arrows around (I think they should go the other way so that my logical challenges to the material are viewed as a PRT rather than what looks like sufficiency). But, no matter. Eli says, "This map is drawn how most people think," so they would accept it, not to withstand a Jonah's scrutiny.

At the base of the map are the four basic principles of TOC that drive all of TOC. If you have those four principles in your life, and they are acting fully at every turn, you will have a meaningful life!

Keep Thinking!

James R. Holt, Ph.D., PE

Engineering & Technology Management

www.vancouver.wsu.edu/fac/holt/

This is Efrat's logic diagram of *The Choice* as shown at the TOCICO International Conference in Tokyo, Japan, November 2009. Recorded by James Holt

This is necessary based logic but the arrows are shown going in the opposite direction (because that is how most people would interpret them. "If you want (tail of arrow) you need to have (head of arrow)."

